



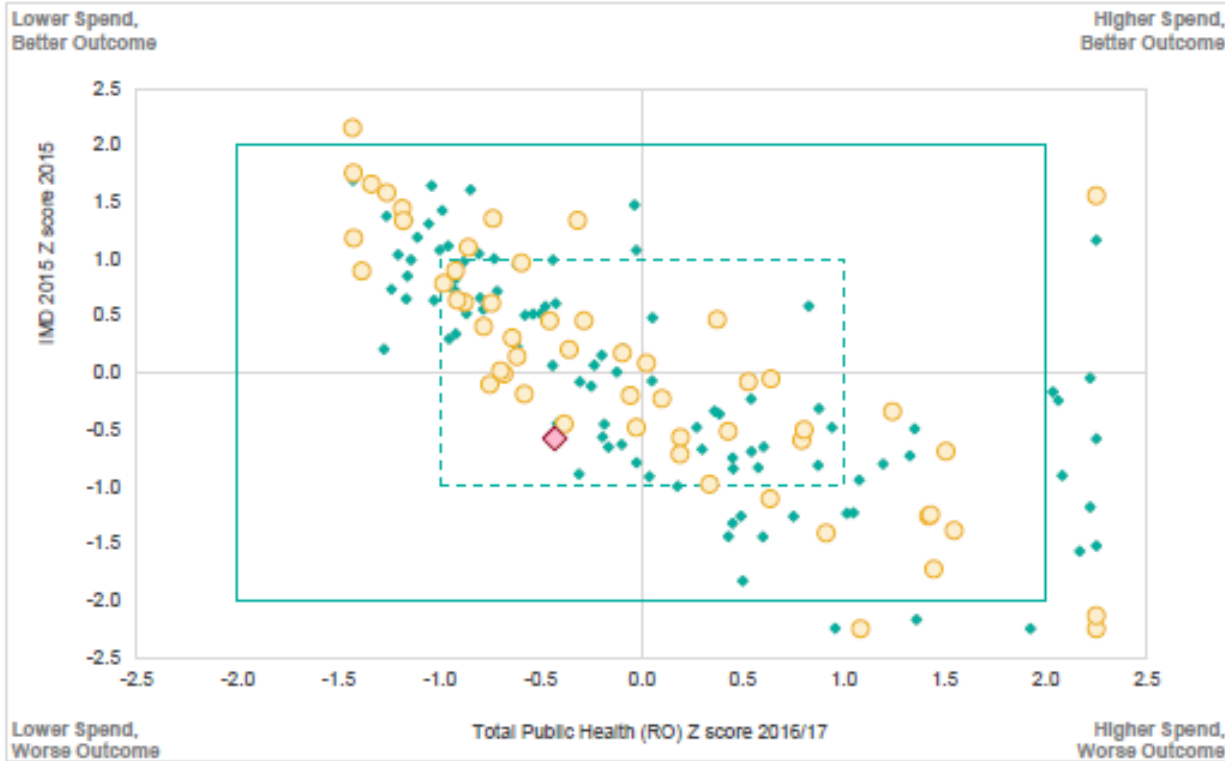
Public Health England

Spend and outcome tool: Detailed quadrant chart

Organisation	Peterborough UA
Comparator	Local authority type

Type	LA
Period	2017

- Legend
- ◆ Peterborough UA
 - ◆ Local Authorities
 - Unitary Authority



Interpreting the chart:

The red diamond represents the selected organisation, with the orange circles representing organisations within the selected organisation's chosen comparator group. The green dots represent the spread of all organisations in England.

A programme lying outside the solid +/- 2 z scores box, may indicate the need to investigate further. If the programme lies to the left or right of the box, the spend may need reviewing, and if it lies outside the top or bottom of the box, the outcome may need reviewing. Programmes outside the box at the corners may need a review of both spend and outcome. Programmes lying outside the dotted/thin +/- 1 z score box may also warrant further exploration.

What is a Z score?

A z score essentially measures the distance of a value from the mean (average) in units of standard deviations. A positive z score indicates that the value is above the mean, whereas a negative z score indicates that the value is below the mean. A z score below -2 or above +2 may indicate the need to investigate further. Each dot represents a programme budget category.

Using the chart:

Click and select the chart, so that Chart 14 appears in the Name Box. Only then hover the mouse over individual points in order to display organisational details in the boxes below the menu sidebar.

Chosen Programme	Public Health
Chosen Spend	Total Public Health (RO)
Outcome Measure	Index of Multiple deprivation

This page is intentionally left blank